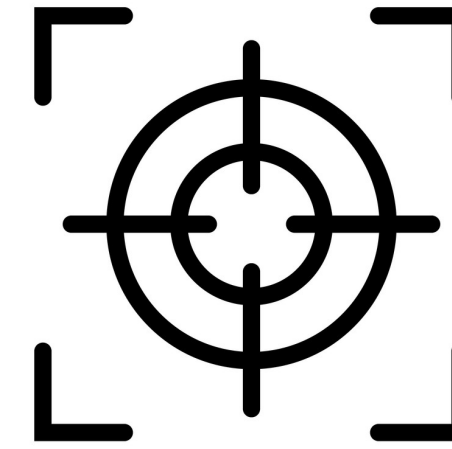


Topic 13: Hormone

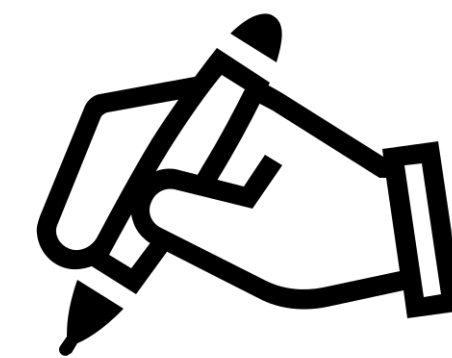


Chapter Analysis



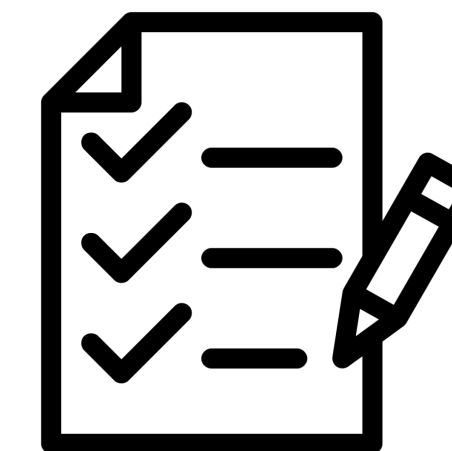
FOCUS

- one of the three chapters under umbrella topic of Co-ordination and Response in Humans
- linked to nervous system and homeostasis



EXAM

- commonly tested in MCQ and structured questions
- tested twice in section B in the past 5 years

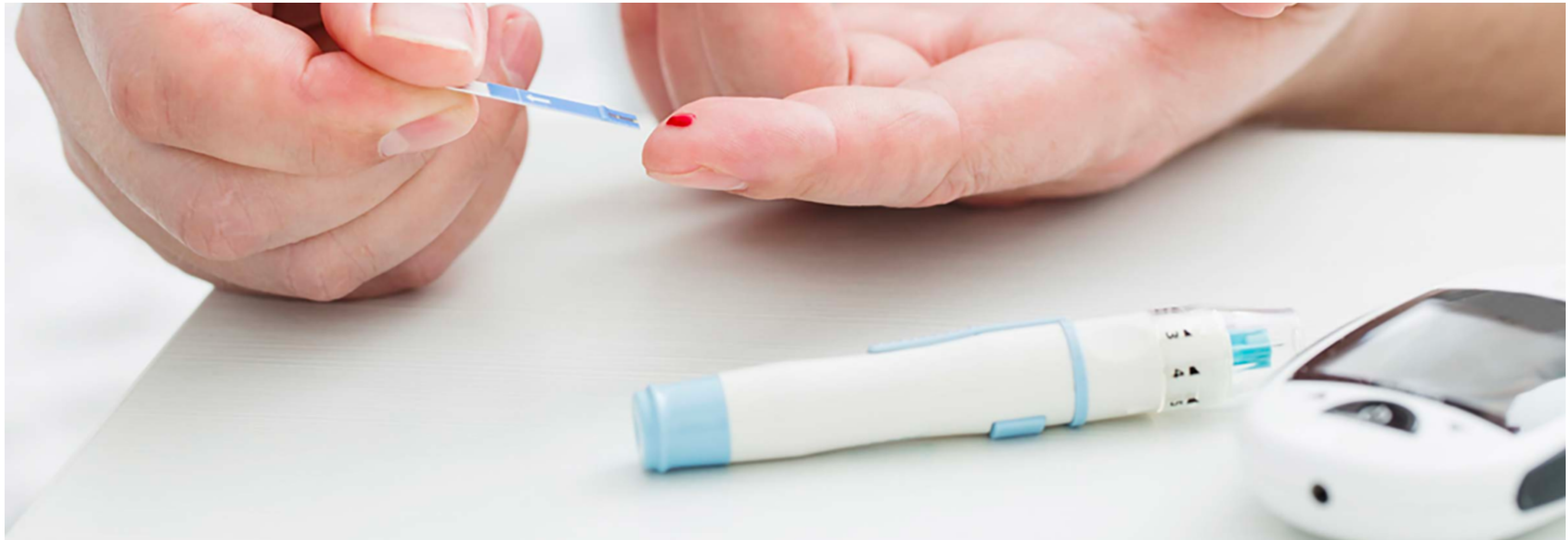


WEIGHTAGE

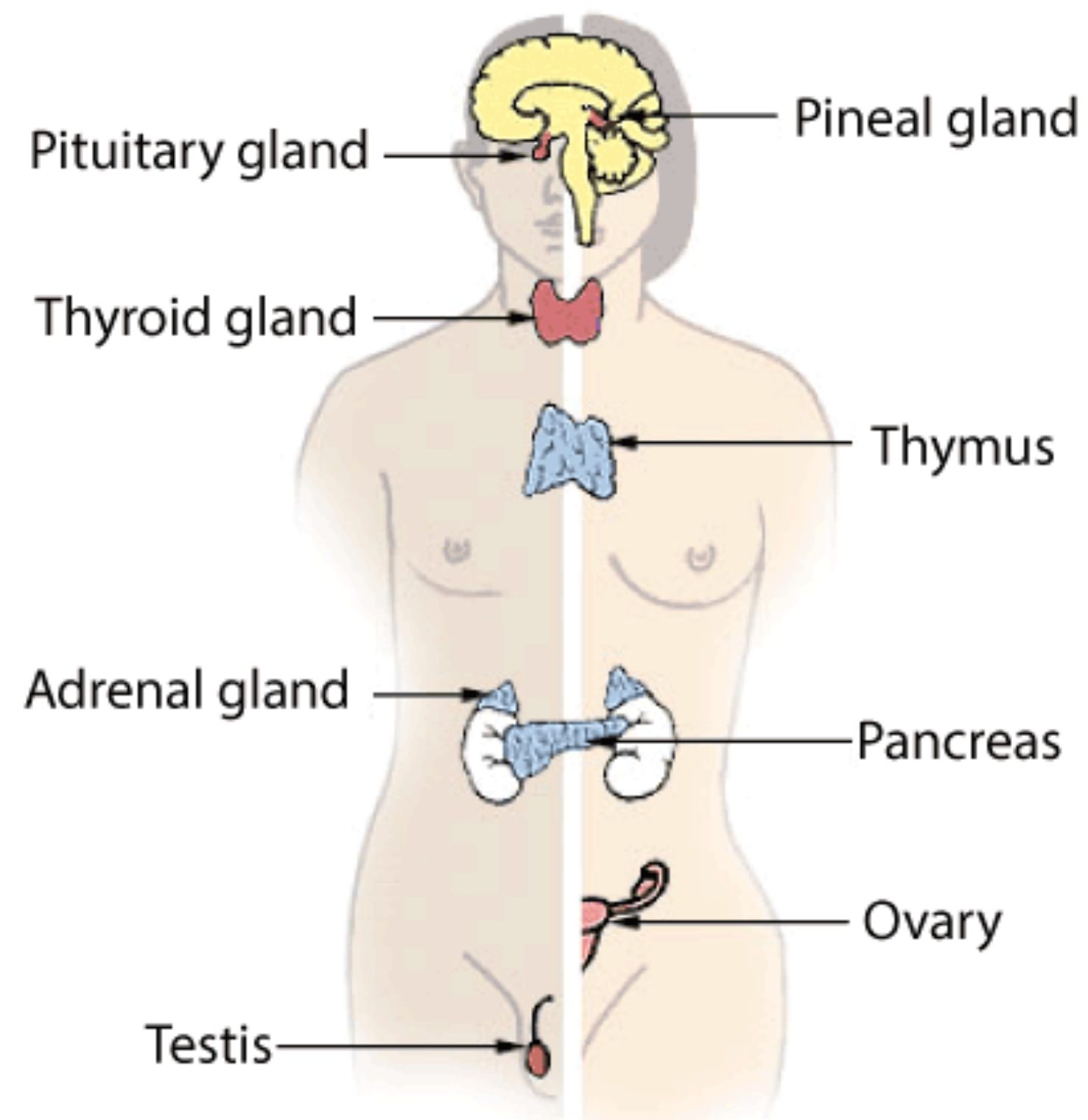
- Constitute to around 4% in Paper 2 in the past 5 years

Key Concept

hormone
insulin and glucagon
diabetes



hormone



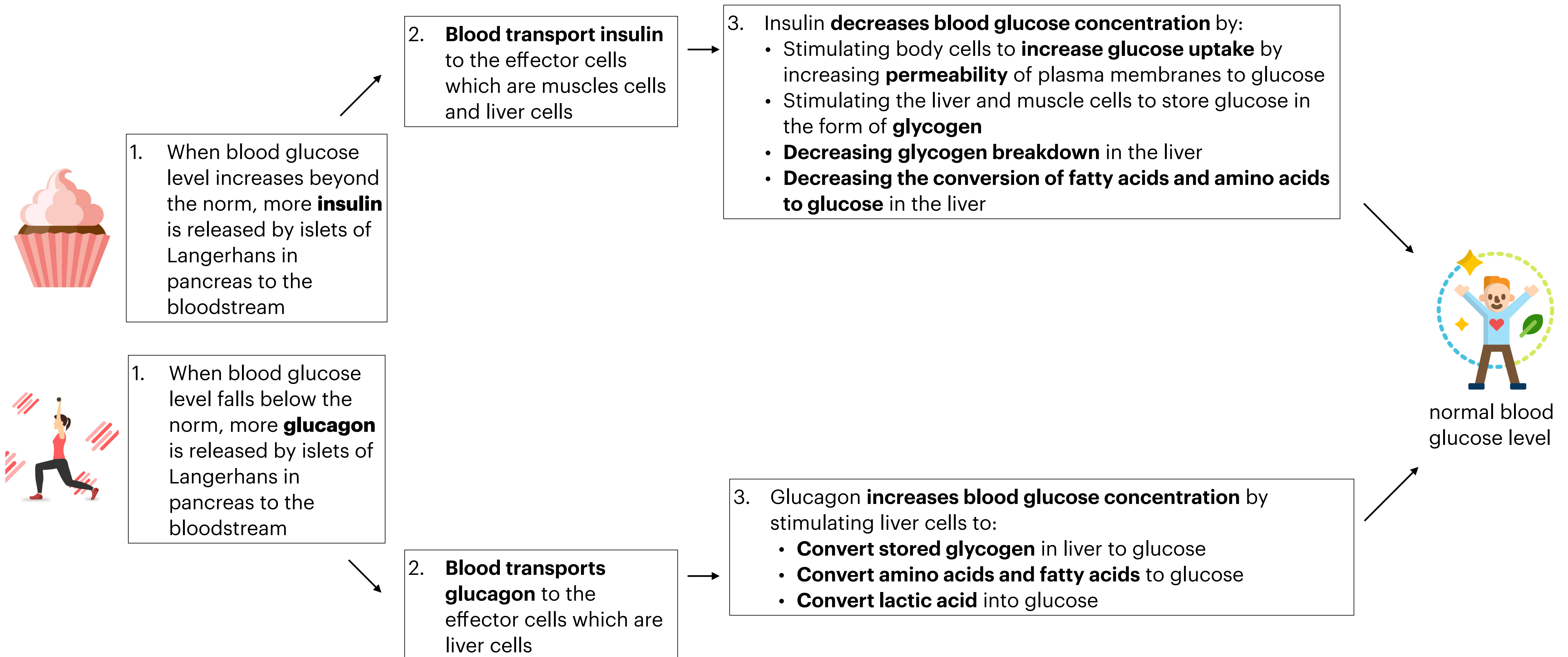
- Hormone is a chemical substance, **produced by endocrine gland** and **secreted directly to blood**
- It is **transported by blood** to target organ to exert its effect
- After they have performed their functions, they are **destroyed by the liver**.

There are 2 types of glands

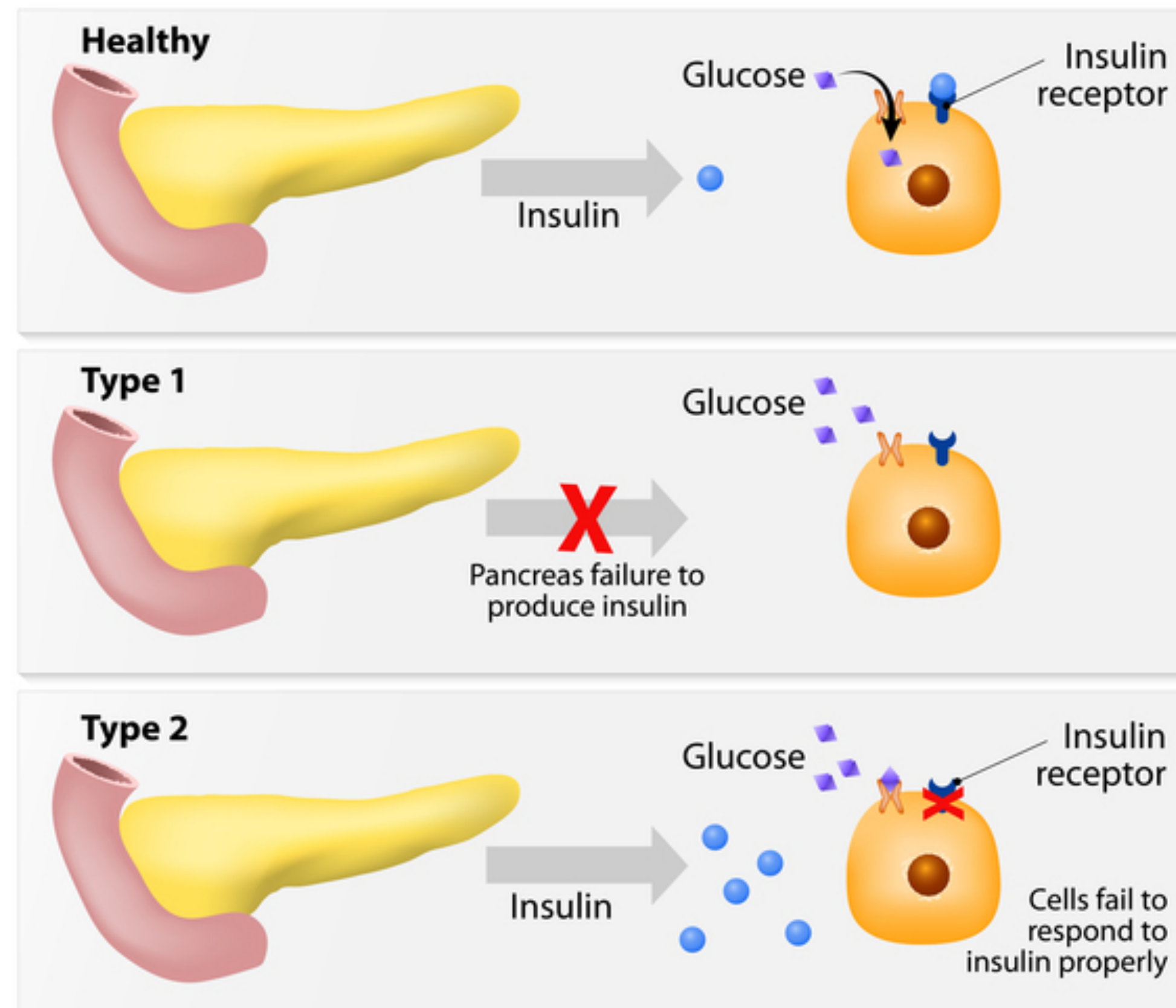
1. **Exocrine glands** are glands that **secrete their products via ducts** eg sweat glands and salivary glands
2. **Endocrine glands** are glands that **secrete their products directly into the bloodstream** (our focus)
 - Some glands are both exocrine and endocrine, eg pancreas, which secretes pancreatic juice via the pancreatic duct, and also secretes the hormone insulin and glucagon from the islets of Langerhans directly into the bloodstream.
 - Other examples of endocrine glands that secrete hormone is as below:
 - Pituitary gland secretes antidiuretic hormone (ADH)
 - Hypothalamus regulates the secretion of some pituitary hormones.
 - Adrenal gland secretes adrenaline.
 - Pancreas islets of Langerhans secrete insulin and glucagon.
 - Testis (in males) secretes testosterone.
 - Ovary (in females) secretes oestrogen and progesterone.

blood glucose regulation

insulin and glucagon



diabetes mellitus



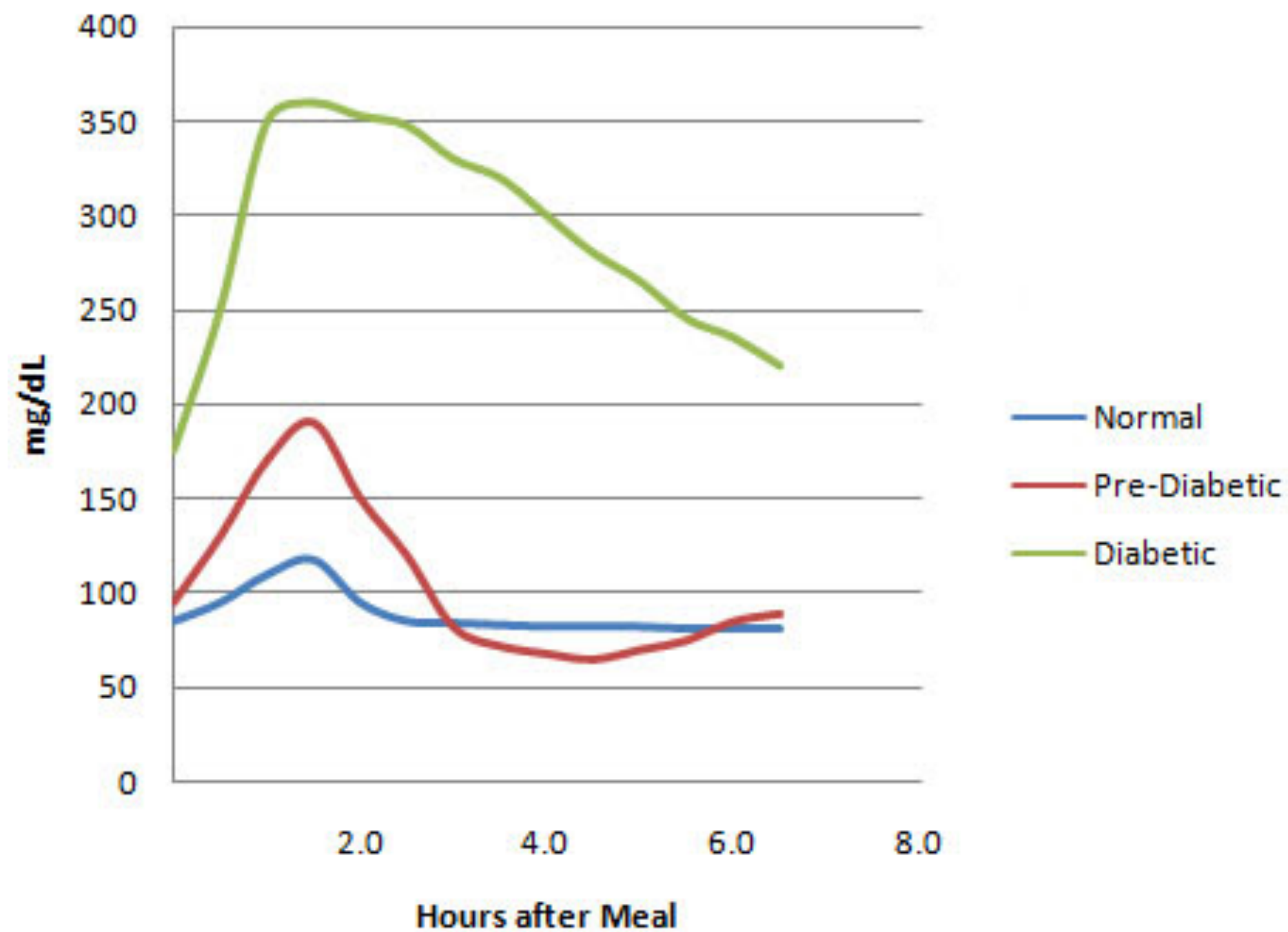
- Diabetes mellitus is a condition in which the **body does not produce sufficient insulin** or **does not respond** to insulin.
- The **excess glucose cannot be converted to glycogen** and cannot be completely reabsorbed in the kidneys and are excreted in the urine.

There are 2 types of diabetes

1. **Type 1 diabetes** or early onset diabetes develops early in a person's life.
 - It is usually genetic.
 - The islets of Langerhans are **unable to produce or secrete sufficient insulin**
2. **Type 2 diabetes** or late onset diabetes develops later in a person's life.
 - It is usually due to **lifestyle factors** such as overweight people are more likely to develop type 2 diabetes.
 - The target cells, such as the muscle and liver cells, **do not respond well to insulin.**

diabetes mellitus

Blood Glucose Levels for Diabetes



Symptoms

1. A **persistent high blood glucose** concentration even a few hours after meal
2. Presence of glucose in the urine as **selective reabsorption could not fully absorb all glucose** presence in the blood
3. Difficulty of **wound healing**
4. Excessive urination, excessive thirst and weight loss

Treatment

- For type 1 diabetes, islets of Langerhans are unable to produce or secrete sufficient insulin, thus the patients have to **inject insulin directly into their bloodstream**. They also have to ensure that they have a **supply of sugary food** such a glucose sweets, as their blood glucose can drop too low if they use too much insulin, exercise too much or eat too little.
- For Type 2 diabetes, their target cells do not respond to insulin. The patients can control their blood sugar level through **diet and lifestyle changes**. For example, regulate the carbohydrate content in their diet, regular exercises

nervous control vs endocrine control

Nervous Control	Endocrine Control
means of coordination within our bodies.	
a stimulus causes the transmission of a message to effector which carries out the response.	
Involve nerve impulses which are electrical signals	Involve hormones which are chemical substances
Impulses are transmitted by neurons	Hormones are carried by blood
Usually fast responses	Usually slow responses
Responses are short lived	Responses can be both short lived or long lasting
Maybe voluntary or involuntary	Always involuntary
Effect is usually localised	Can affect more than one organ

For more notes & learning materials, visit:
www.overmugged.com

'O' levels crash course program

Professionally designed crash course to help you get a condensed revision before your 'O' Levels!

The 4 hour session focuses on going through key concepts and identifying commonly tested questions!

Our specialist tutors will also impart valuable exam pointers and tips to help you maximise your preparation and ace your upcoming national exam!

The crash courses will begin in June 2021 and last till Oct 2021.

Pre-register now on our [website](http://www.overmugged.com) and secure your slots!



IG handle:
[@overmugged](https://www.instagram.com/overmugged)



Join our telegram
channel:
[@overmugged](https://www.telegram.com/@overmugged)



Need help?

Hee Xin Wei
(Private tutor with 5
years of experience)

90721842 (Whatsapp)

[@xinweihee](https://www.telegram.com/@xinweihee)
(telegram username)

