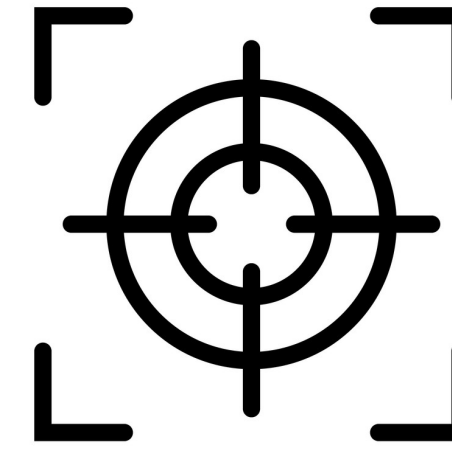


# Topic 6: Transport in Plants



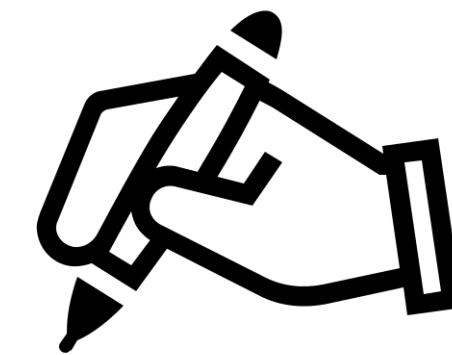


# Chapter Analysis



## **FOCUS**

- straightforward chapter
- incorporate knowledge from previous chapter



## **EXAM**

- commonly tested in MCQ and structured questions
- appear in section B twice in the past 5 years



## **WEIGHTAGE**

- Constitute to around 5% in Paper 2 in the past 5 years



**Key Concept**

**Xylem**

**Phloem**

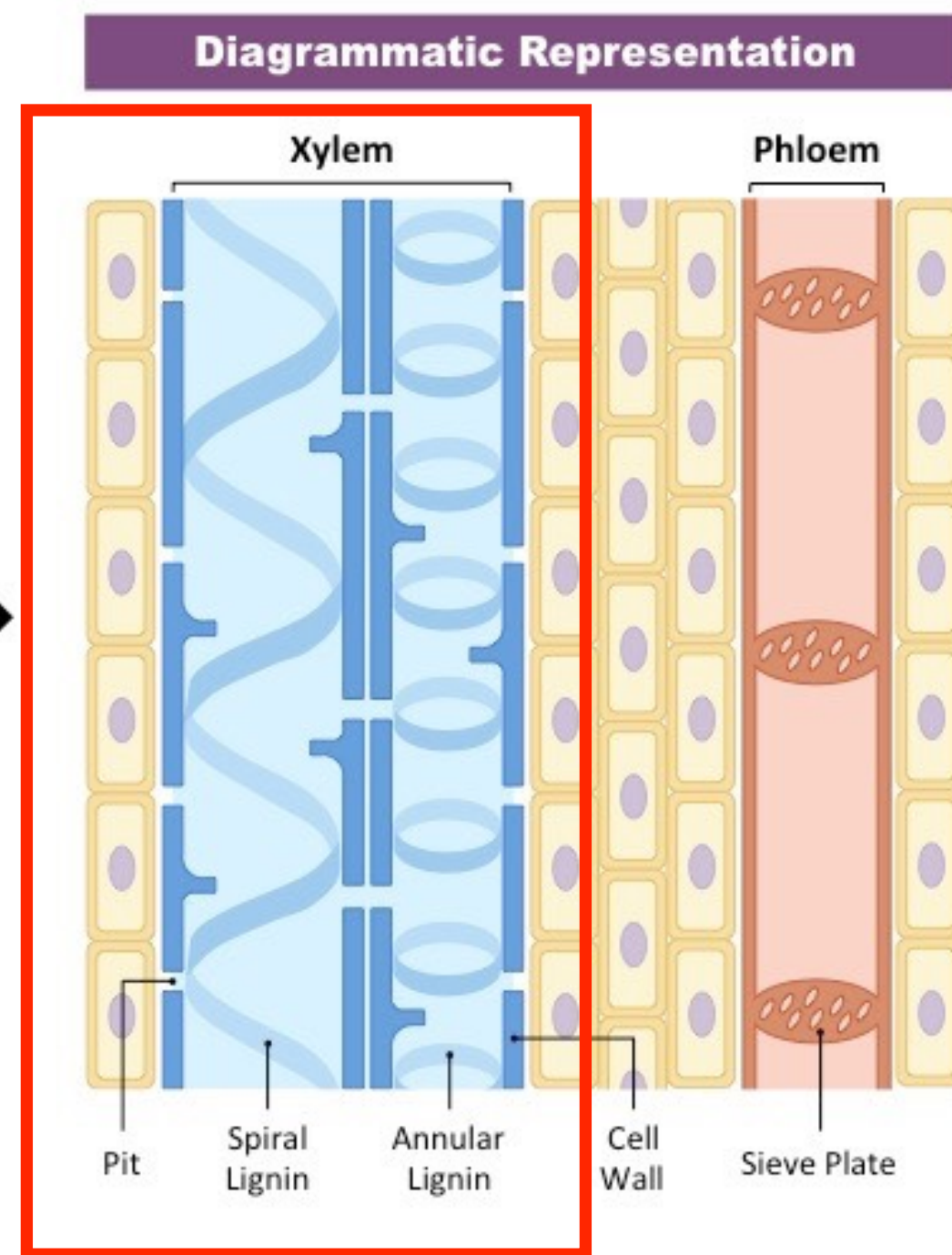
**Translocation**





# Vascular Bundle

## Xylem

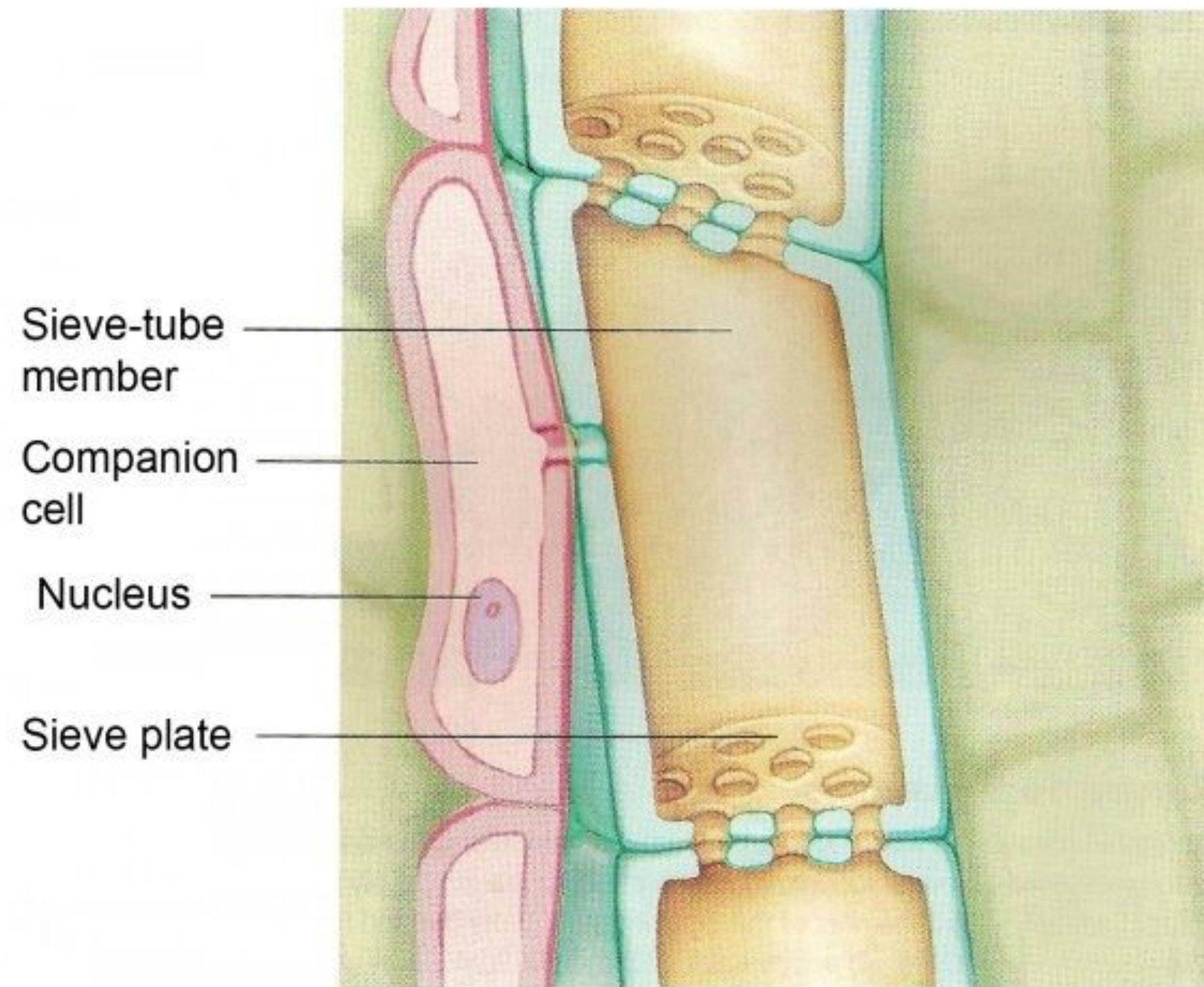


Structure	Function	Adaptation
<ul style="list-style-type: none"> <li>- Xylem cells are <b>dead</b> at maturity</li> <li>- Xylem vessels are <b>long and hollow</b> tubes that are made of xylem cells</li> </ul>	<p><b>Transport water</b> and mineral salts from the roots to the leaves</p>	<p>Absence of protoplasm and cross-walls which could impede water flow through the lumen</p>
<ul style="list-style-type: none"> <li>- Inner walls of vessels are <b>deposited with lignin</b> in different shapes</li> </ul>	<p><b>Mechanical support</b> for the plant</p>	<p>Deposition of lignin on the cell walls which strengthens vessel walls, providing support</p>



# Vascular Bundle

## Phloem



A phloem is made up sieve tube elements and companion cells

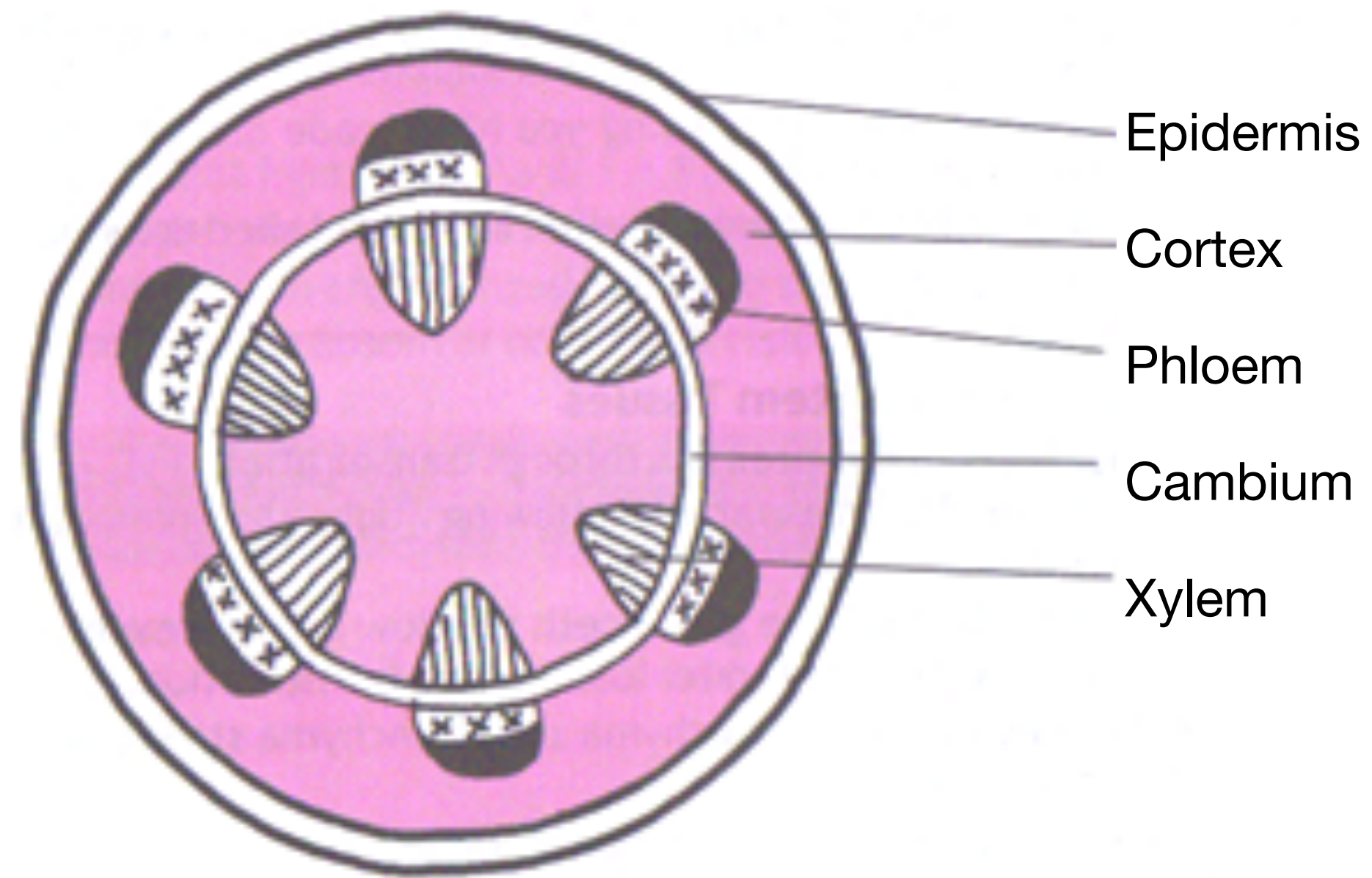
Function: **Transport sugars and amino acids** from the leaves to other parts of the plant.

Structure	Adaptation
<ul style="list-style-type: none"><li>• <b>Sieve tube elements</b> have degenerate protoplasm, they have no organelles such as the nucleus or vacuole</li><li>• There are porous walls between sieve tube elements called sieve plates</li></ul>	Pores in sieve plates allow uninterrupted flow of food substances through the sieve tubes
<ul style="list-style-type: none"><li>• one <b>companion cell</b> is closely associated with each sieve tube element, which contains organelles and support the the metabolic functions of the sieve tube elements.</li><li>• Companion cells have many <b>mitochondria</b></li></ul>	Companion cells contain mitochondria that can carry out respiration and release energy for active transport of manufactured food substances from photosynthesis

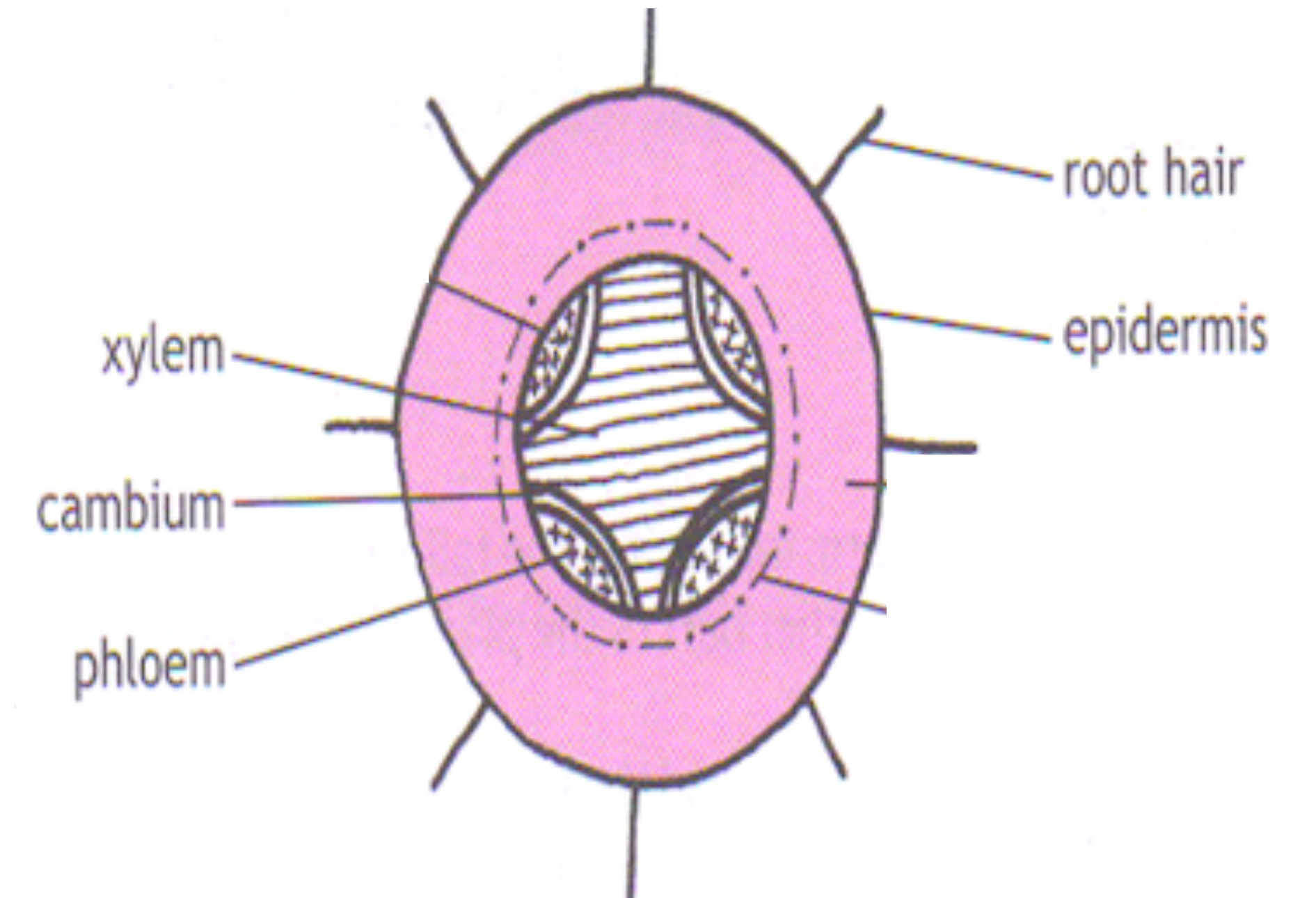


# Position of vascular bundle

**Vascular bundle in dicotyledonous stems**



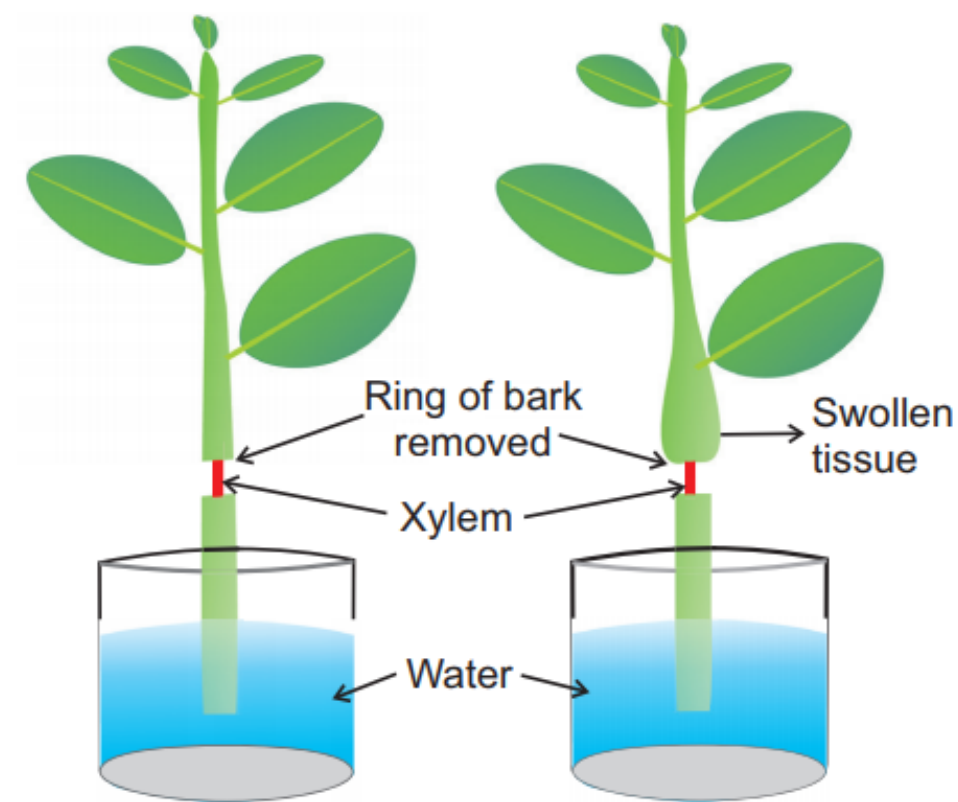
**Vascular bundle in dicotyledonous roots**



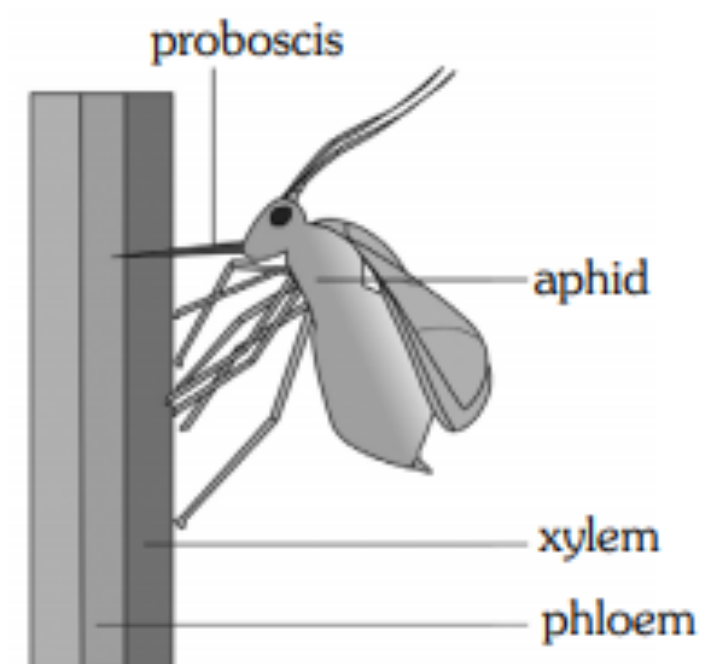


# Translocation

- Translocation is the **transport of sugars from the leaves to other parts of the plant** via the **phloem** tissues.
- The source of sugars is the leaves, which is the site of photosynthesis, while other parts of the plant which require sugar are known as the sink.
- **Energy is required** for this process as the mode of uptake of sugars into sieve tube elements in the leaves is active transport.
- At the end of the sieve tube where sugars are being unloaded for use, sugars are also removed from the sieve tube by active transport.



1. In the **ringing experiment**, a ring of bark that contains the **phloem is removed**, exposing the xylem. When sugar is transported from the leaves to the roots, it cannot move beyond the cut, leading to a bulge to form on top of the cut. The bulge is due to accumulation of sugar and retention of water



2. Aphids can be used to collect sap. When an aphid is introduced to a plant, it knows where to **insert its proboscis into the phloem sieve tubes** to feed on the sucrose.



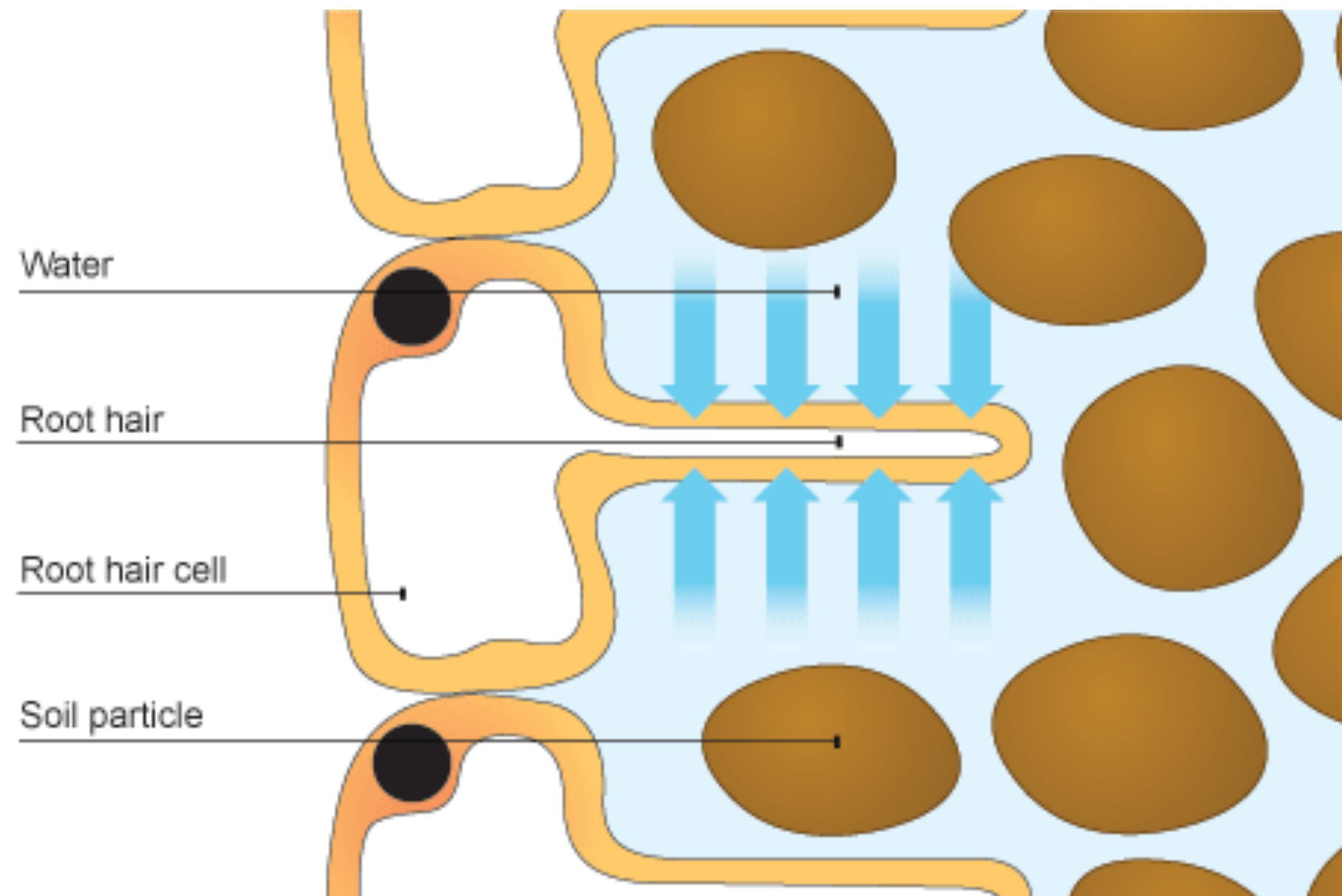
**Key Concept**

# **Root Hair** **Transpiration**





# Root Pressure



**Function:** Water and ion uptake by root hair

## Structure and adaptations

- Root hairs are long and narrow, thus **increasing surface area to volume ratio** for rapid absorption of water and minerals.
- The cell sap contains sugars, amino acids and mineral salts which makes the **water potential of cell sap lower** than that of soil solution

**Water travels from the roots to the leaves against gravity through 3 primary mechanisms:**

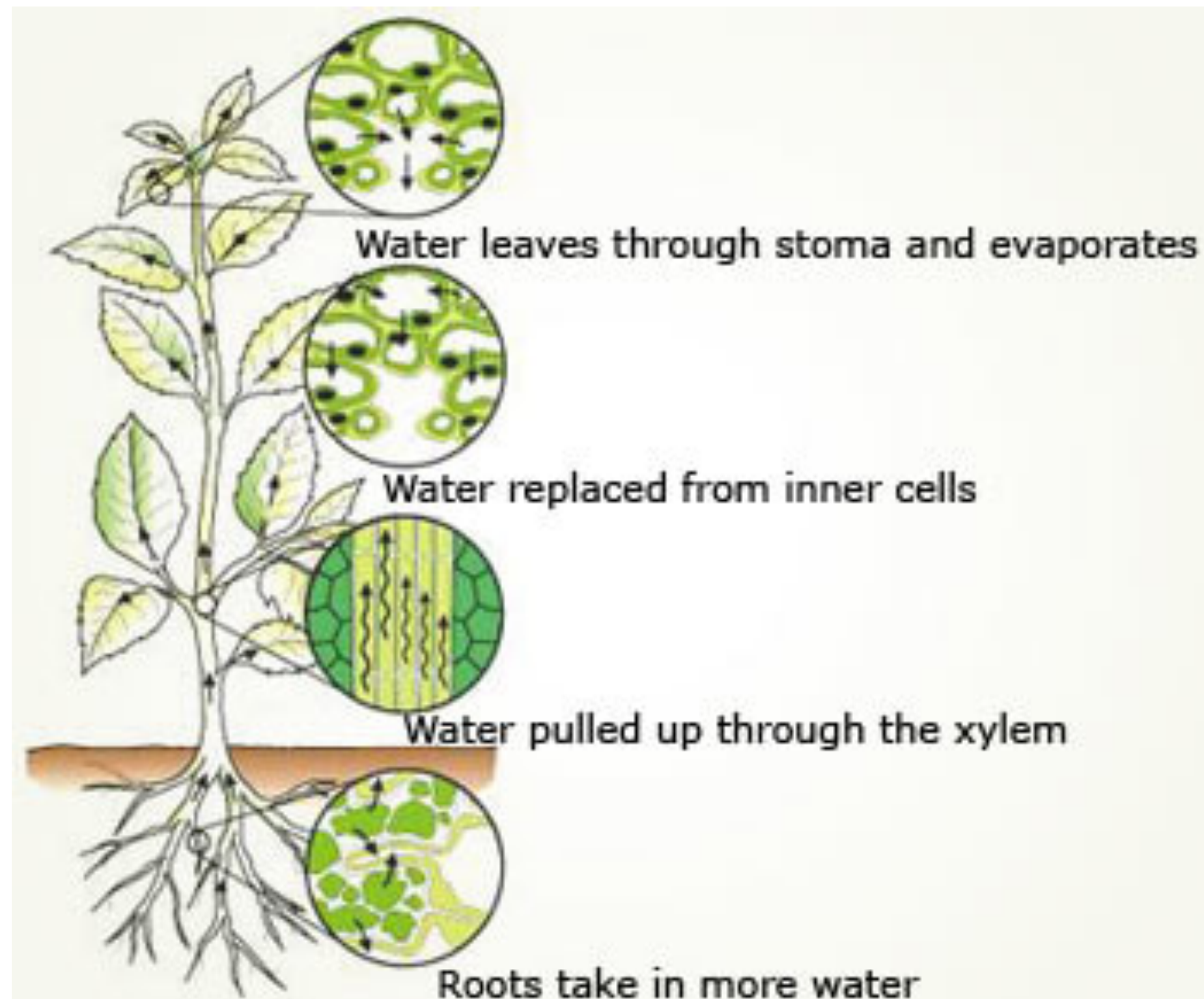
### 1. Root pressure

- Root hair cells pump mineral salts into the xylem vessels using active transport. This lowers the water potential of the xylem vessels, thus water moves from the surrounding cells into the xylem vessels by osmosis, creating a pressure that forces water to move upwards
- Not the main mechanism for movement of water in most plants as it can only force water to travel a short distance.



# Transpiration

## transpiration pull



### 3. Transpiration Pull

- Transpiration is the **loss of water vapour** from the **stomata** of the leaves **through diffusion**
- Transpiration is a consequence of gaseous exchange in plants for photosynthesis to occur
  - 1) For photosynthesis to occur, the **stomata are open** for **carbon dioxide intake**.
  - 2) Water continuously moves out of the mesophyll cells to form a **thin film of moisture**
  - 3) **Water evaporates** from this thin film of moisture and **moves into the intercellular air spaces**
  - 4) This leads to the **loss of water vapour** from the intercellular air spaces in the leaves as the air **diffuse outside** that has a lower water vapour concentration via the stomata
  - 5) As water evaporates from the mesophyll cells, the **water potential of the cell sap decreases**, thus they **absorb water by osmosis from the xylem vessels**.
  - 6) This results in **transpiration pull**, which is the main force that causes water to travel upwards in plants.

Transpiration pull is important as

- It **draws water and mineral salts from the roots** to the stems and leaves, which is needed for photosynthesis and to keep plants turgid
- **Cooling of the plants** as evaporation of water from the cells in the leaves removes latent heat of vaporisation.



# Transpiration

## effect on transpiration

1. Effects of **variation of air movement**: if wind is present, it removes the water vapour that accumulates outside the stomata due to transpiration. This leads to **steep concentration gradient** between intracellular air spaces and atmospheric air, thus increasing the rate of transpiration.
2. Effect of **temperature**: Higher surrounding temperature increases the **rate of evaporation** of the thin film of moisture and also increases the **movement of water molecules**, thus increases the rate of transpiration
3. Effect of **humidity**: Humidity refers to the concentration of water vapour present in the air. A lower humidity means a lower water vapour concentration, thus a steeper concentration gradient between the atmospheric air and intracellular air spaces. This increases the rate of water vapour diffusing out of the leaves thus the rate of transpiration
4. Effect of **light intensity**: Higher light intensity leads to increased **rate of photosynthesis in guard cells** thus causes stomatal opening. When stomata is open, the rate of transpiration will increase



# Effect of transpiration

## wilting



- Water lost via transpiration has to be replaced by absorption from the roots to the leaves by xylems
- When the rate of water absorption exceeds the rate of transpiration, plant cells become turgid and plant becomes firm and upright.
- When the rate of transpiration exceeds the rate of water absorption, plant cells become flaccid and plant wilts.

**Advantages:** When the leaves fold up, the leaves droop and less leaf surface is exposed to the sun thus reducing water loss. Guard cells are flaccid, closing the stoma, further reducing water loss.

**Disadvantages:** When the plant wilts, the leaves droop and less leaf surface is exposed to the sun and thus rate of photosynthesis decreases.



For more notes & learning materials, visit:  
[www.overmugged.com](http://www.overmugged.com)

## 'O' levels crash course program

Professionally designed crash course to help you get a condensed revision before your 'O' Levels!

The 4 hour session focuses on going through key concepts and identifying commonly tested questions!

Our specialist tutors will also impart valuable exam pointers and tips to help you maximise your preparation and ace your upcoming national exam!

The crash courses will begin in June 2021 and last till Oct 2021.

*Pre-register now on our [website](http://www.overmugged.com) and secure your slots!*



IG handle:  
[@overmugged](https://www.instagram.com/overmugged)



Join our telegram channel:  
[@overmugged](https://t.me/overmugged)



Need help?

**Hee Xin Wei**  
(Private tutor with 5 years of experience)

**90721842 (Whatsapp)**

[@xinweihee](https://t.me/xinweihee)  
(telegram username)

